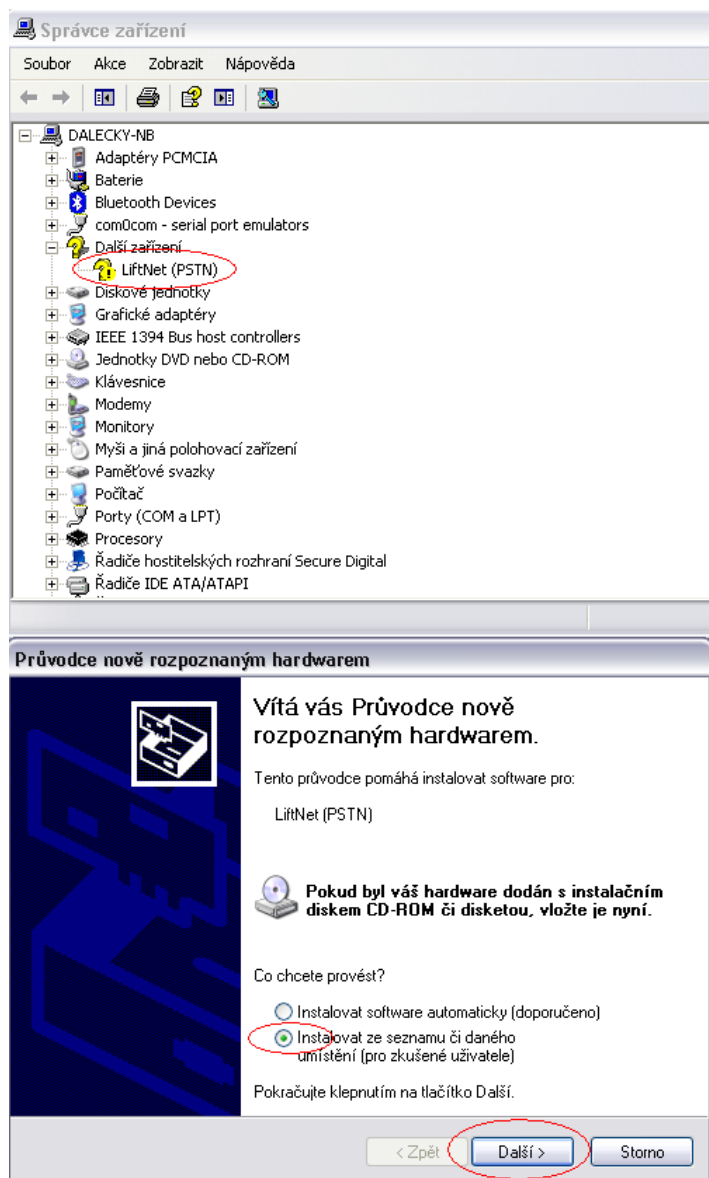


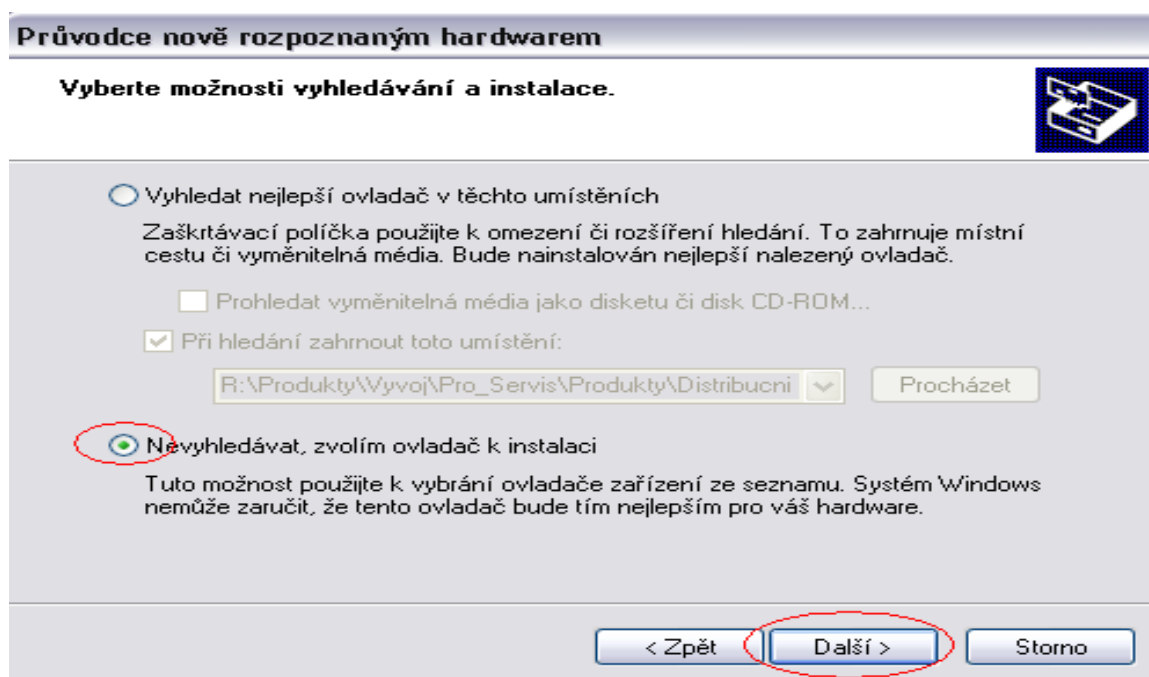
How to do upgrade of 2N LiftNet via Service Tool

1. Download USB driver and the latest Service Tool to your computer. Both software tools you can find at the 2N webpage, see the link <http://www.2n.cz/en/products/intercom-systems/lift-phones/liftnet/downloads/>
2. Connect a central LiftNet unit via USB cable to your computer and install USB driver to get the connection.
3. Open control panel of your computer to see, that your computer recognized connection of unknown device. Then continue by manual installation and press "Next" (Pic. 1).



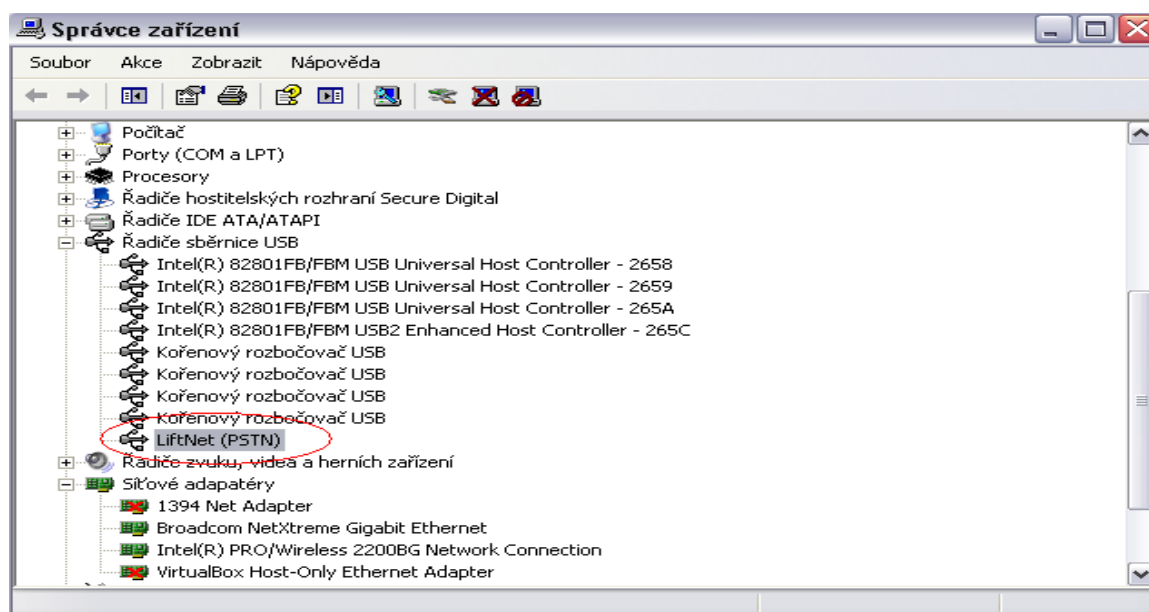
Pic. 1

4. Press "Browse" to find the path of your USB driver and press "Next" (Pic. 2).



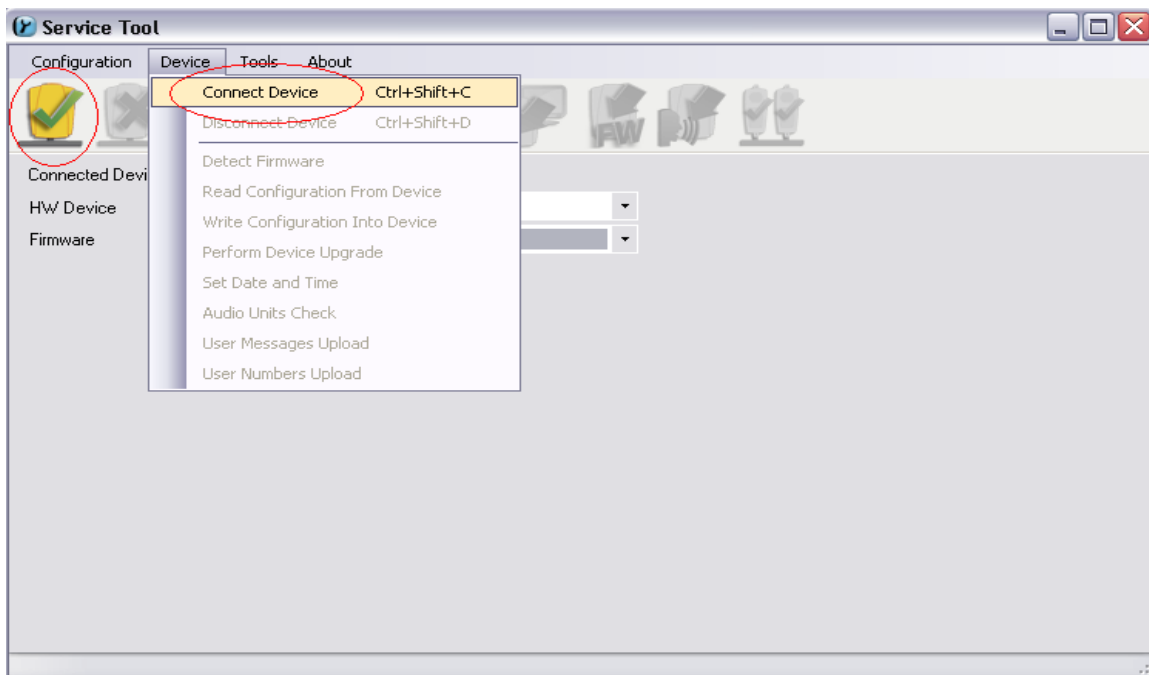
Pic. 2

5. Installation will start. Confirm the end by pressing "Done". In control panel you will see, that you have been successful and you have got the correct connection to computer via USB cable (Pic. 3).



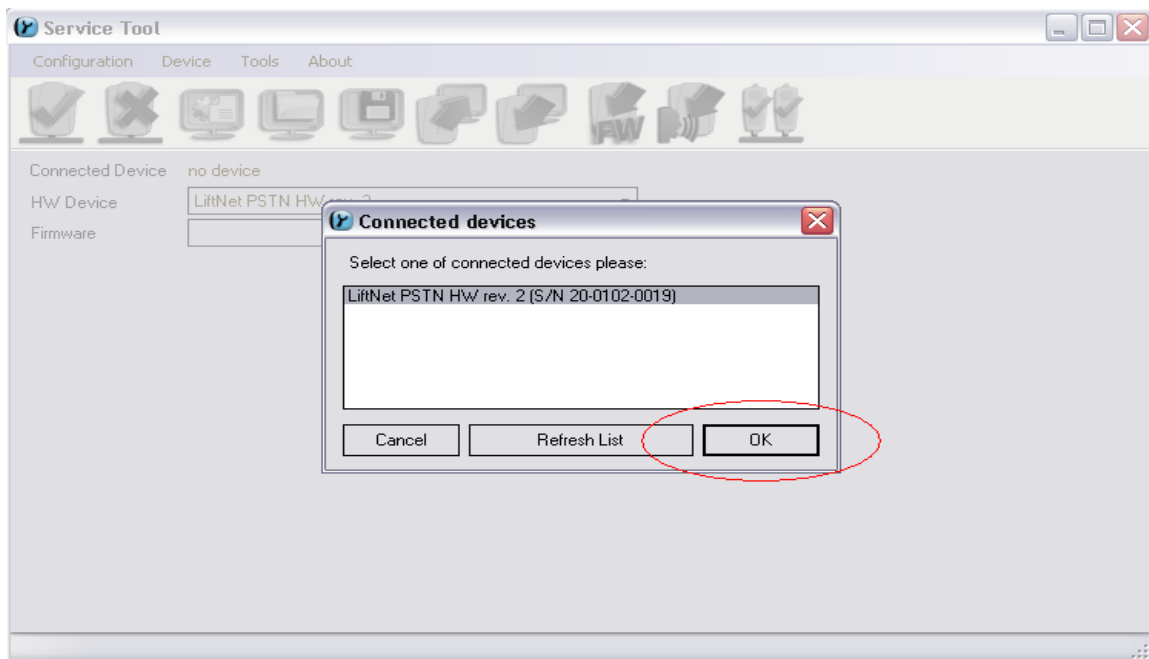
Pic. 3

6. Now you can install Service Tool to your computer. Once you finish the installation, icon will be launched on your desktop. Run the application and get connection with central LiftNet unit (Pic. 4).



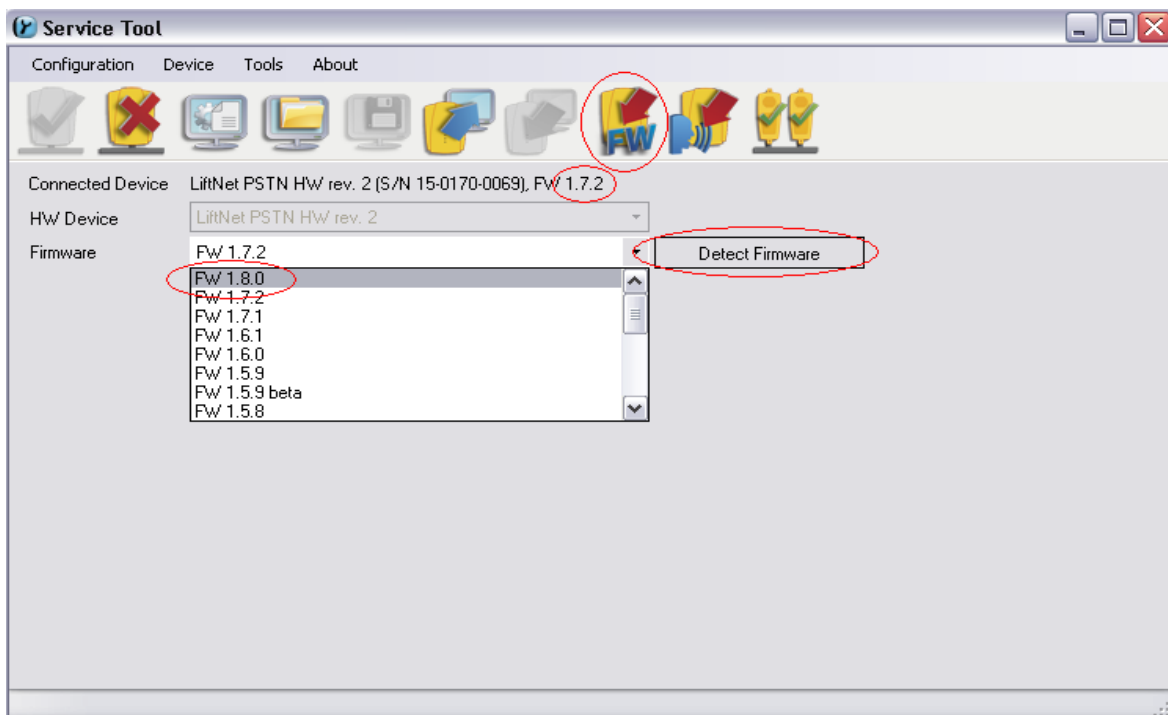
Pic. 4

7. Choose connected central LiftNet unit and confirm by "OK" (Pic. 5).

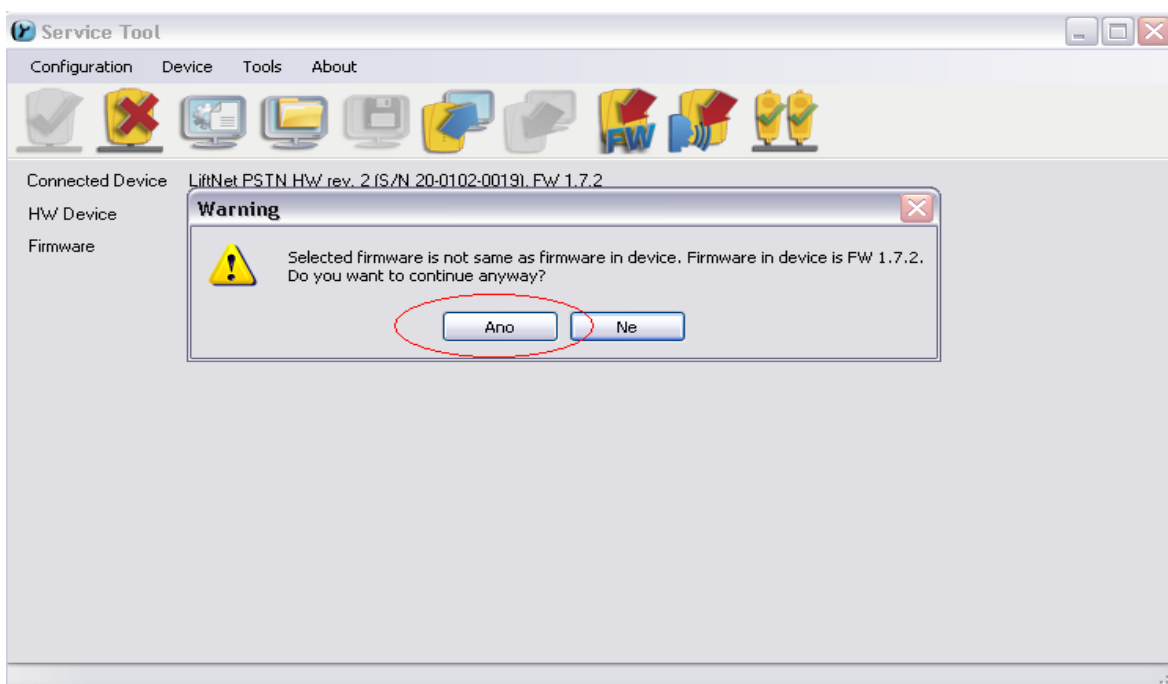


Pic. 5

8. "Detect firmware" button will show you current firmware of central LiftNet unit. Then choose new version you want to upgrade (Pic.6). Confirm by "Yes" (Pic.7).

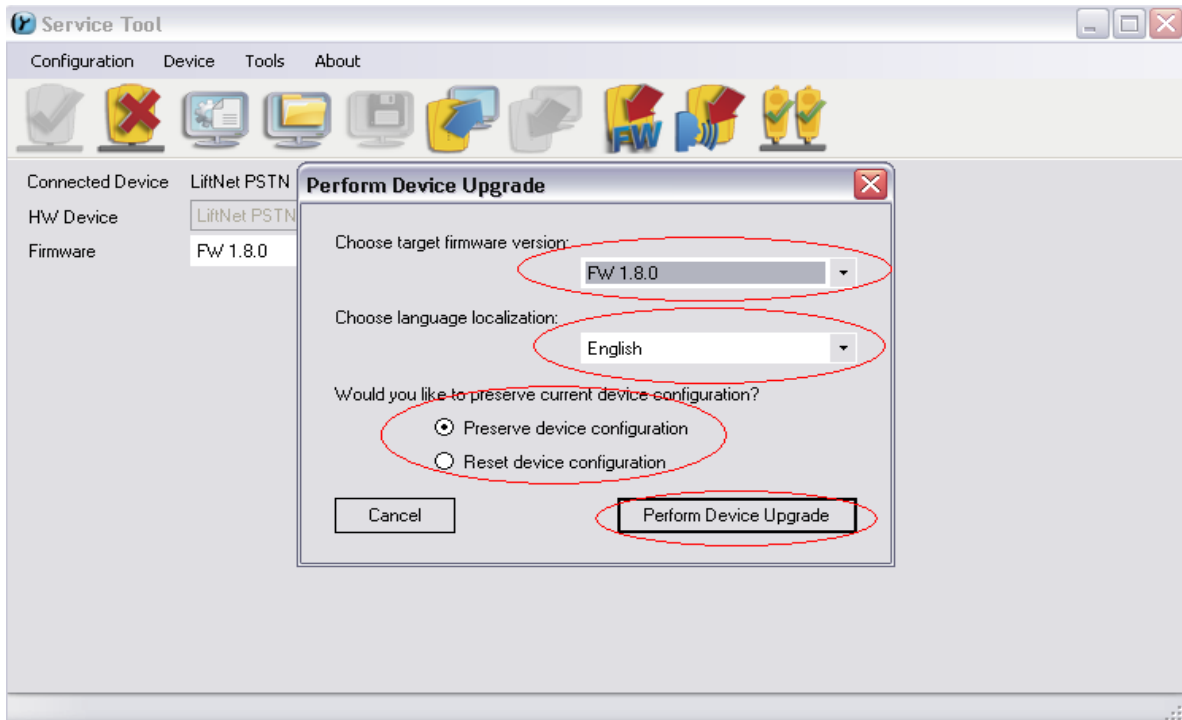


Pic. 6

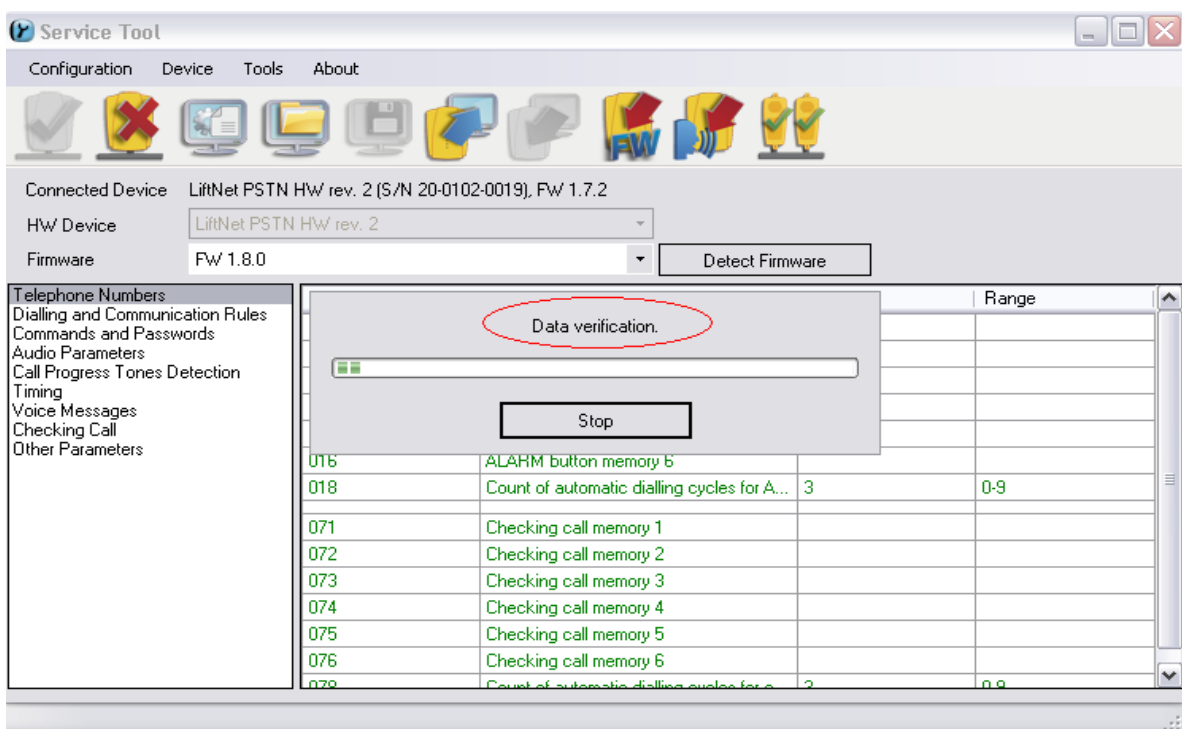


Pic. 7

9. Choose target firmware version, language and preserve/reset configuration. Confirm by "Perform Device Upgrade" (Pic. 8).

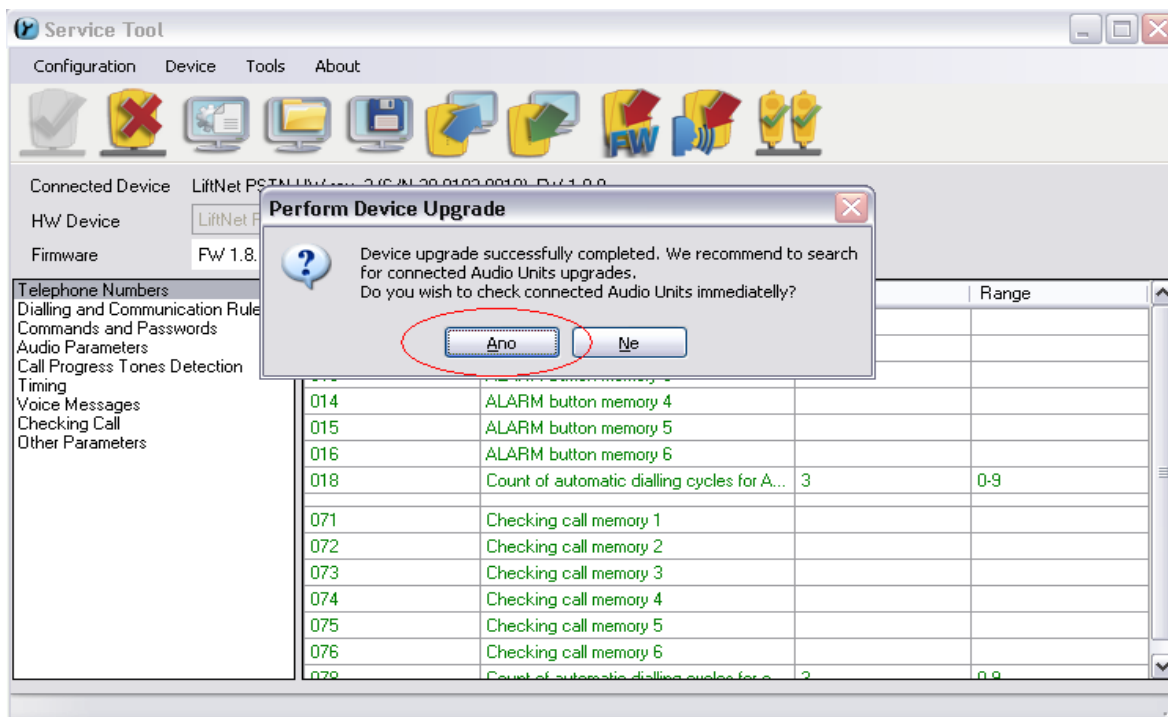


Pic. 8



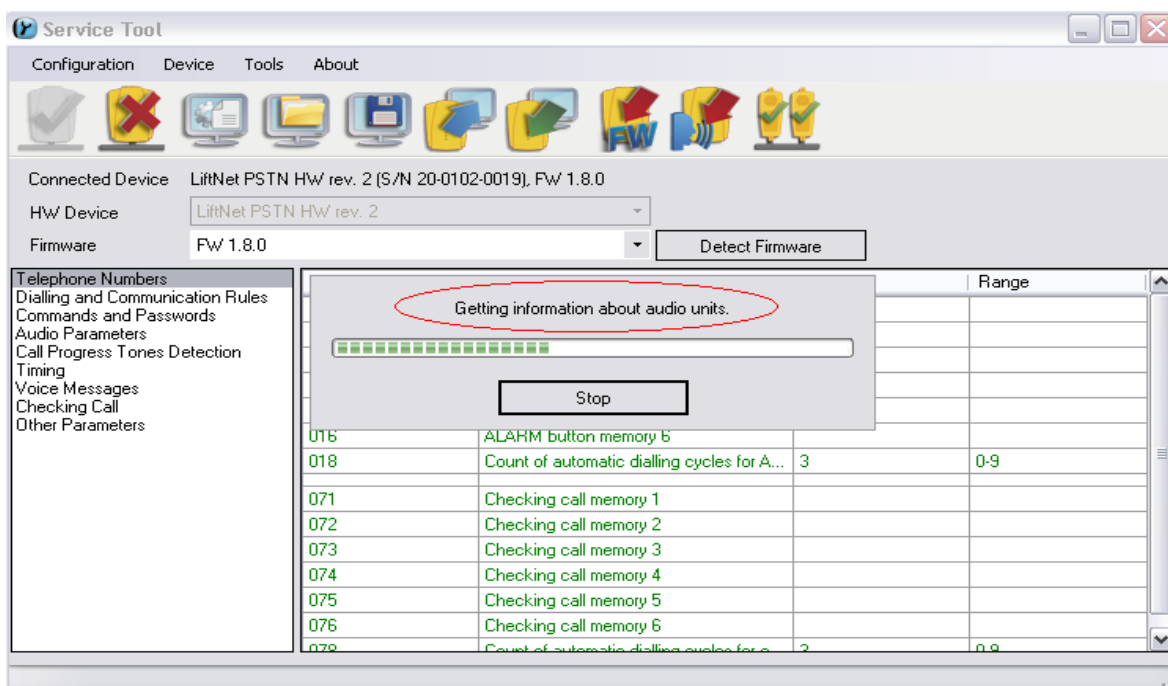
Pic. 9

10. Central LiftNet unit has been successfully upgraded. Confirm by "Yes" (Pic. 10).



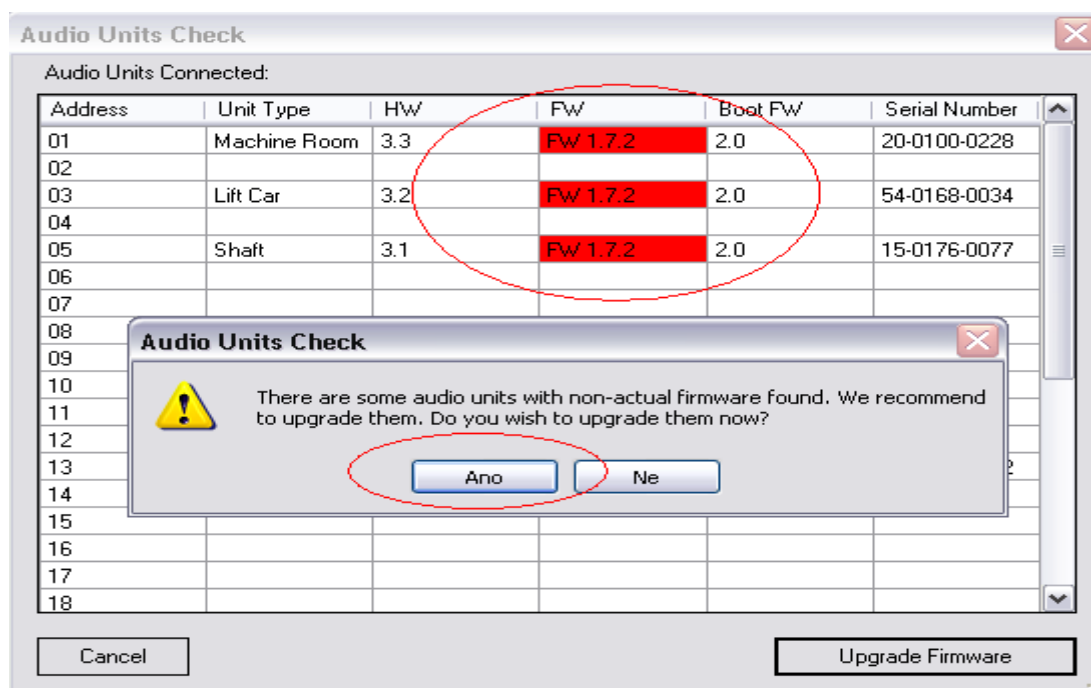
Pic. 10

11. Then central LiftNet unit will check all connected audio unit (Pic. 11).



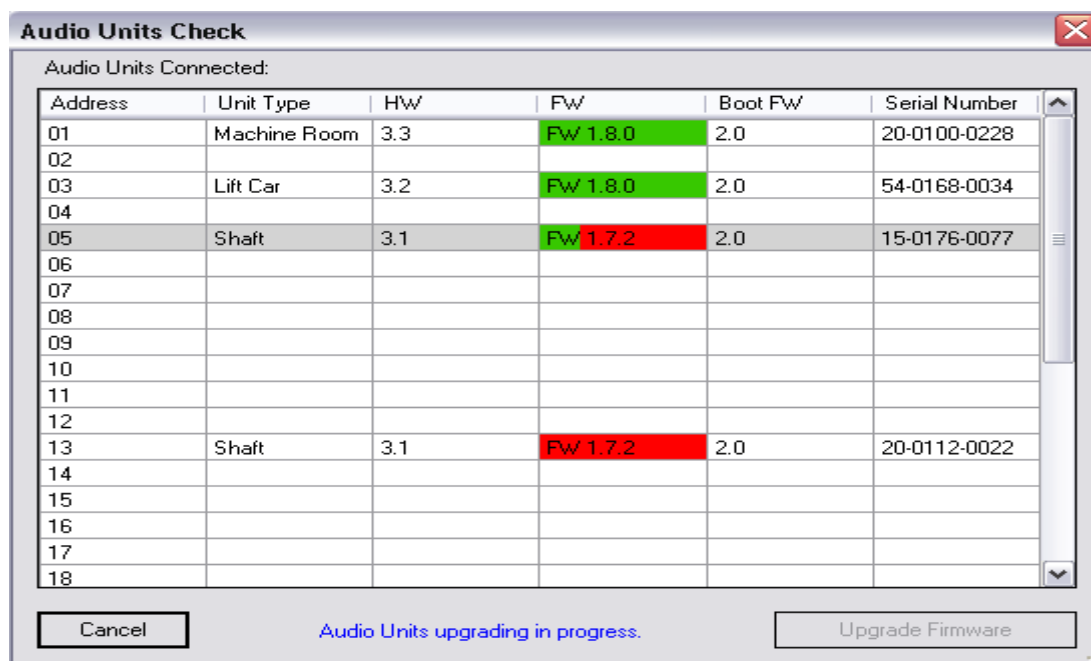
Pic. 11

12. To get right connection of whole LiftNet system you also need to upgrade all audio units, so press "Yes" (Pic. 12).



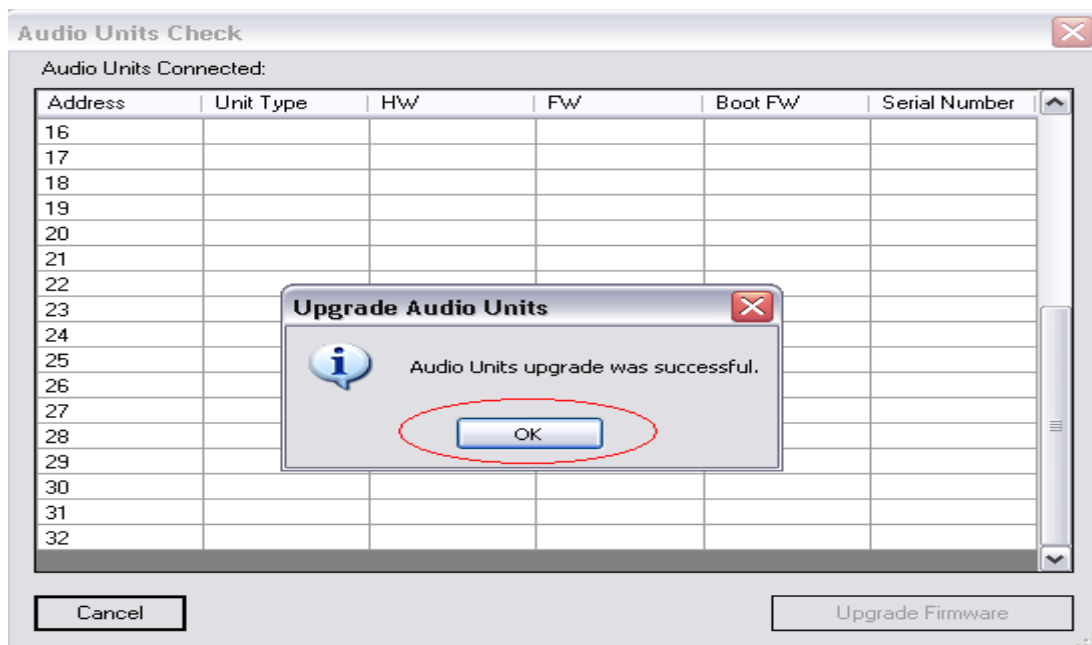
Pic. 12

13. Now you can see audio units upgrading (Pic.13).



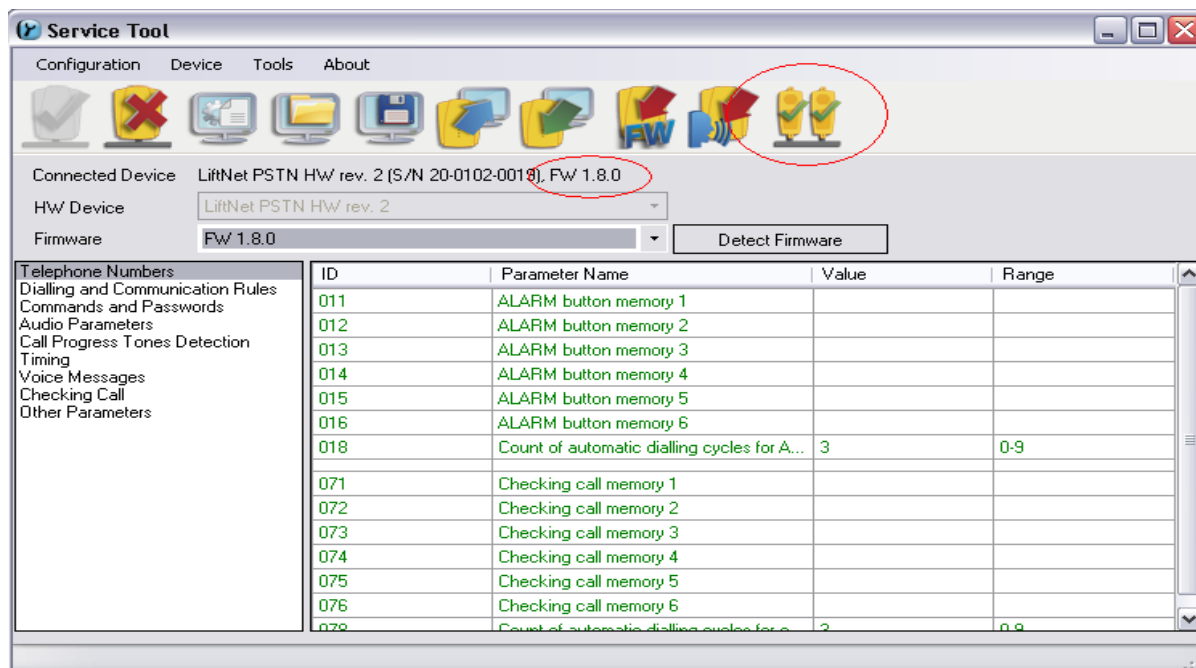
Pic. 13

14. Confirm by "OK" (Pic. 14).



Pic. 14

15. Once you have finished the upgrade, you can check if it was successful. The new firmware of the central LiftNet unit you can see in the main page. For audio units press icon "audio units check" (Pic. 15). You will be able to verify the current firmware version in audio units (Pic. 16).



Pic. 15

Audio Units Check ✖

Audio Units Connected:

Address	Unit Type	HW	FW	Boot FW	Serial Number
01	Machine Room	3.3	Fw 1.8.0	2.0	20-0100-0228
02					
03	Lift Car	3.2	Fw 1.8.0	2.0	54-0168-0034
04					
05	Shaft	3.1	Fw 1.8.0	2.0	15-0176-0077
06					
07					
08					
09					
10					
11					
12					
13	Shaft	3.1	Fw 1.8.0	2.0	20-0112-0022
14					
15					
16					
17					
18					

Pic. 16