

Setup for GSM to VoIP calling

Setup procedure:

- 1) GSM ringing setup
- 2) Short dials setup
- 3) DDI to ring table setup
- 4) ID for transit calls setup

1) GSM ringing setup:

First of all create rule for incoming calls from GSM module.

- External lines
 - Line types
 - Types of digital lines
 - GSM services
 - Trunks
 - Trunks for ring accessing
 - Ringings**
 - Ringings tables
 - Global data
 - Group
 - Transit call identification
 - GSM AT commands
 - GSM call volume levels

The screenshot shows the configuration interface for Ringing, split into Day and Night profiles. Both profiles are set to 'Tab.1' and have the following checked options: DISA, DDI.number.plan, FAX, and Modem. The 'Intern.numb.plan' option is unchecked in both. Below the options are two tables, one for Day and one for Night, detailing the ringing sequence.

	Action	Par.
1	DISA	CONFIRM
2	Wait	20
3	DISA End	-
4	Hang up	-

	Action	Par.
1	DISA	CONFIRM
2	Wait	20
3	DISA End	-
4	Hang up	-

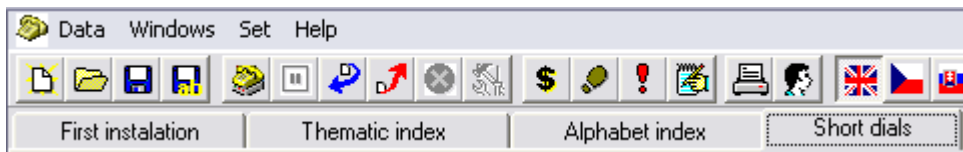
In ringing table set up DISA, which will allow DDI to VoIP phone.

Do not forgot, that you have to do these settings in GSM1 card.

The screenshot shows a row of five buttons: 'External 1', 'GSM1', 'GSM2', 'So1', and 'VoIP'. The 'GSM1' button is highlighted, indicating it is the selected card for configuration.

2) Short dials setup:

You can find this menu in bookmark at the top on your screen.



Set up DDI that contains number you want to dial to VoIP. (it's number **23** in our case) For this selection we have to set up the outgoing trunk, vich contains VoIP line.

1	<input type="text" value="23"/>	<input type="text" value="23"/>	<input type="checkbox"/> Not able for group 1
	Call Type	Trunk 6	<input type="checkbox"/> Not able for group 2
			<input type="checkbox"/> By-pass authorization
			<input type="checkbox"/> Not able to delete

(if you want to dial more numbers set up DDI for each of them)

3) DDI to ring table:

Set up dial that enables you to Access ringing tables. It's number of SIP telephone **23** in our case so there is need to be created a new ringing table with number **23** in it.



That's how ringing table(number **2** in our case) looks like.

	Action	Par.
1	Call short dial	23
2	Hang up	---

4) ID for transit calls setup:

Its necessarily to do this setup for assignment some ID to transit call. You can set up anything for lines, that are used for outgoing calls.

External lines

Line types	CO1	Virt.2
Types of digital lines		
GSM services		
Trunks	GSM1	Virt.1
Trunks for ring accessing		
Ringing	GSM2	Virt.1
Ringing tables		
Global data		
Group	So1	...
Transit call identification		
GSM AT commands		
GSM call volume levels	VoIP	Virt.1