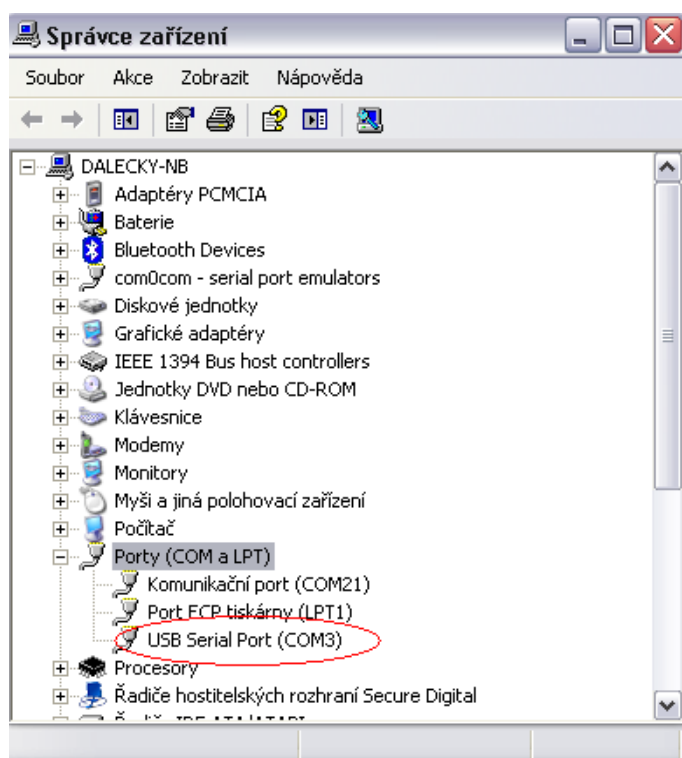


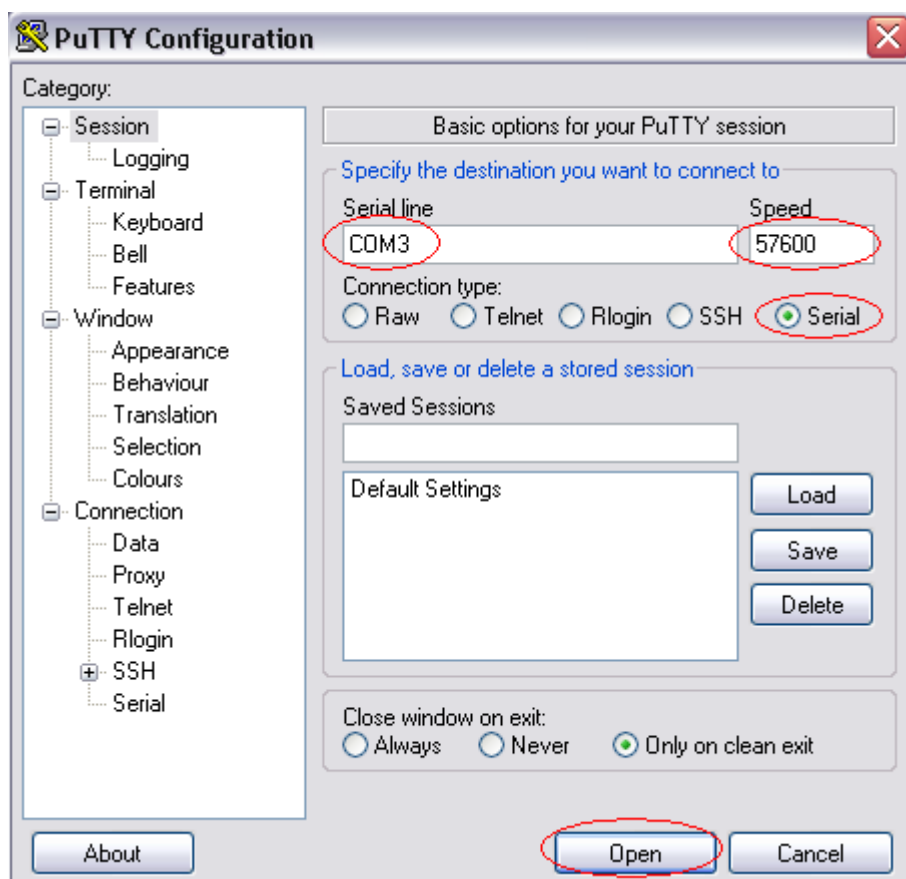
How to send or receive SMS message via GSM module by AT commands

1. Make sure the SIM card has logged into your GSM gateway correctly.
2. Verify quality of signal to be sure that SMS messages will be send and received.
3. Connect gateway to your PC via cable RS232.
4. Open control panel of your computer to see on what COM port your computer recognized the GSM gateway (Pic. 1).



Pic. 1

5. Get connection via Telnet application (Putty, HyperTerminal), Open Putty specify COM3, Speed 57600 and Open (Pic. 2).



Pic. 2

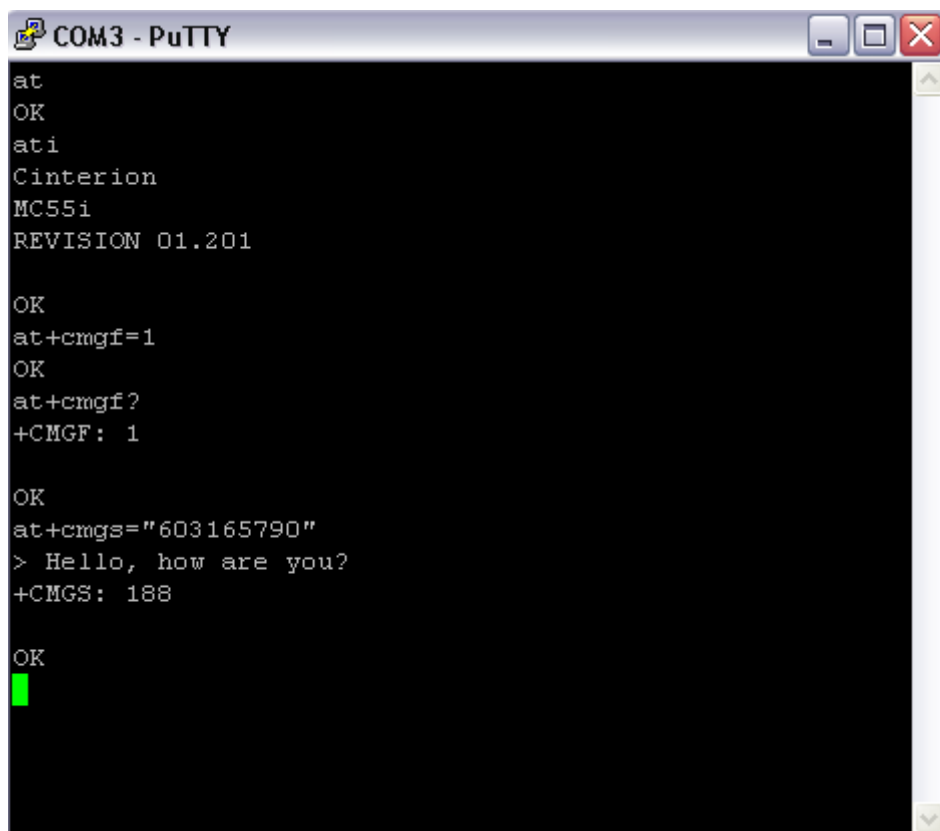
6. Once you will connect you are able to send AT commands to send or receive SMS message via GSM module.

How to send SMS message

There are two ways how to send SMS message to GSM network. Sending messages via the module directly to the GSM network, or sending messages to memory of the module and then by command to send to the GSM network.

Sending messages via the module directly to the GSM network

1. You are able to choose if you like to use text mode or PDU mode (Hexadecimal code)
2. Use **at+cmgf?** To check what mode you are in.
To switch mode to:
PDU at+cmgf=0
text at+cmgf=1
3. Use **at+cmgs="phone number of receiving side"** to send message straight away to GSM network. Press "Enter".
4. You will get this sign ">" that means you can start to write text of SMS message. Press "CTRL+Z", to send SMS message to network. You can see example on (Pic. 3).



```
COM3 - PuTTY
at
OK
ati
Cinterion
MC55i
REVISION 01.201

OK
at+cmgf=1
OK
at+cmgf?
+CMGF: 1

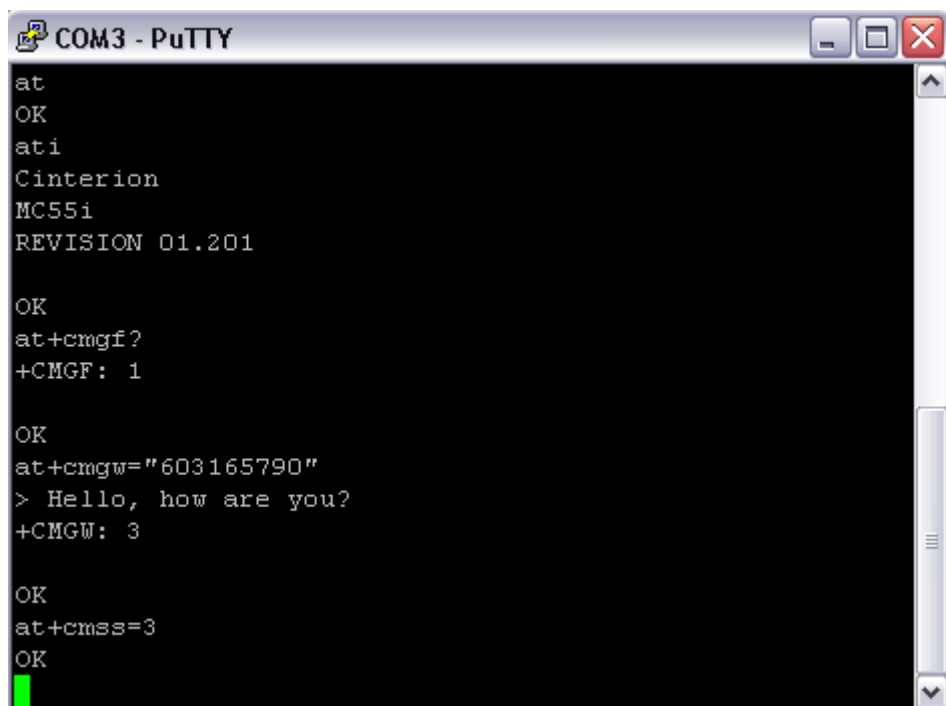
OK
at+cmgs="603165790"
> Hello, how are you?
+CMGS: 188

OK
█
```

Pic. 3

Sending messages to memory of the module and then by command to send to the GSM network

1. Use **at+cmgw="phone number of receiving side"** to send message to storage. Press "Enter".
2. You will get this sign ">" that means you can start to write text of SMS message. Press "CTRL+Z", to send SMS message to memory. You will get answer **+CMGW: some number**. That number means what position in storage is your SMS message. Example on (Pic. 4) is **+CMGW: 3**
3. Use **at+cmss=3** to send SMS message from storage to GSM network. You can see whole AT communication on (Pic. 4).



```
COM3 - PuTTY
at
OK
ati
Cinterion
MC55i
REVISION 01.201

OK
at+cmgf?
+CMGF: 1

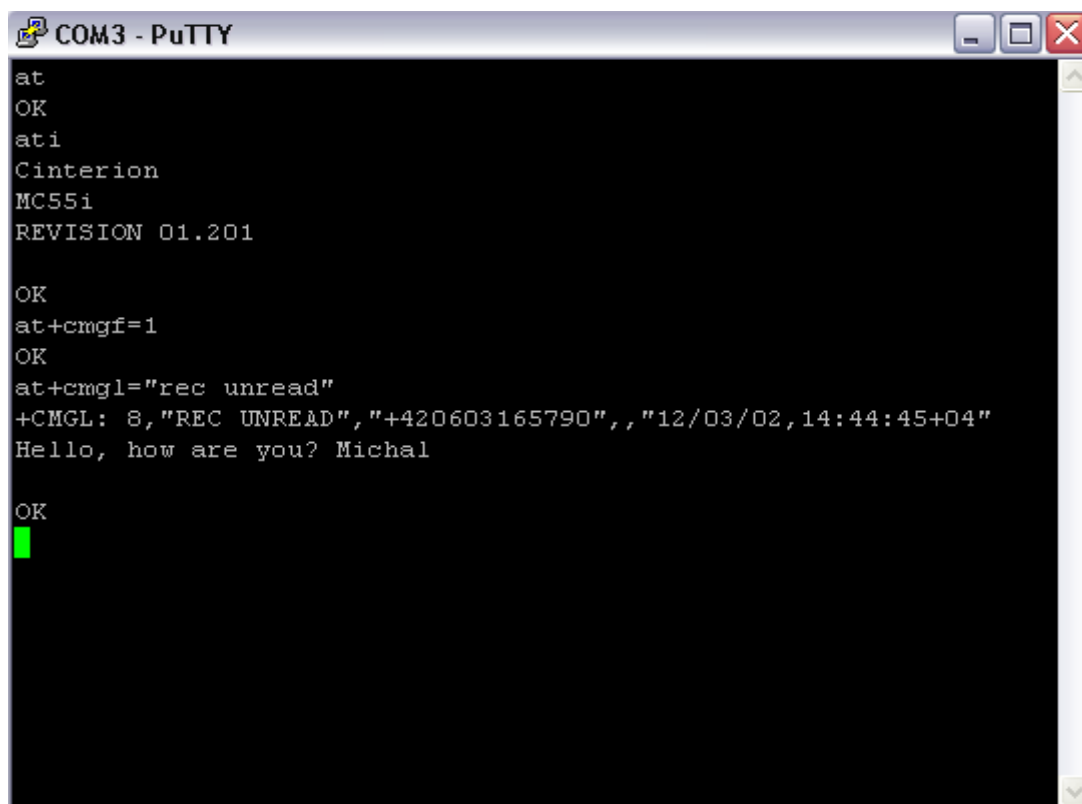
OK
at+cmgw="603165790"
> Hello, how are you?
+CMGW: 3

OK
at+cmss=3
OK
█
```

Pic. 4

How to receive SMS message

1. You are able to choose if you like to use text mode or PDU mode (Hexadecimal code)
2. Use **at+cmgf?** To check what mode you are in.
To switch mode to:
PDU at+cmgf=0
text at+cmgf=1
3. You are able to see list of SMS messages you have got assign under the module.
4. Use **at+cmgl="all", "rec read", "rec unread"** to see list of all messages, only read messages or only unread messages. Example on (pic. 5).



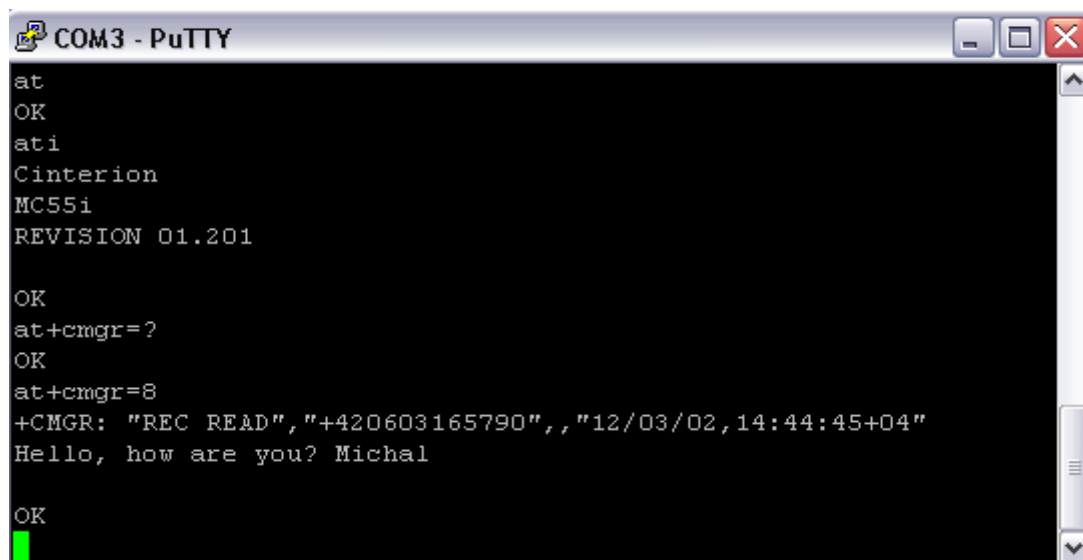
```
COM3 - PuTTY
at
OK
ati
Cinterion
MC55i
REVISION 01.201

OK
at+cmgf=1
OK
at+cmgl="rec unread"
+CMGL: 8,"REC UNREAD","+420603165790",,"12/03/02,14:44:45+04"
Hello, how are you? Michal

OK
█
```

Pic. 5

5. Use **at+cmgr=8** if you want to read exact SMS message (Pic. 6). Position of SMS message you can find out from list of messages. Example on (Pic. 5) +CMGL: 8.



```
COM3 - PuTTY
at
OK
ati
Cinterion
MC55i
REVISION 01.201

OK
at+cmgr=?
OK
at+cmgr=8
+CMGR: "REC READ","+420603165790",,"12/03/02,14:44:45+04"
Hello, how are you? Michal

OK
█
```

Pic. 6